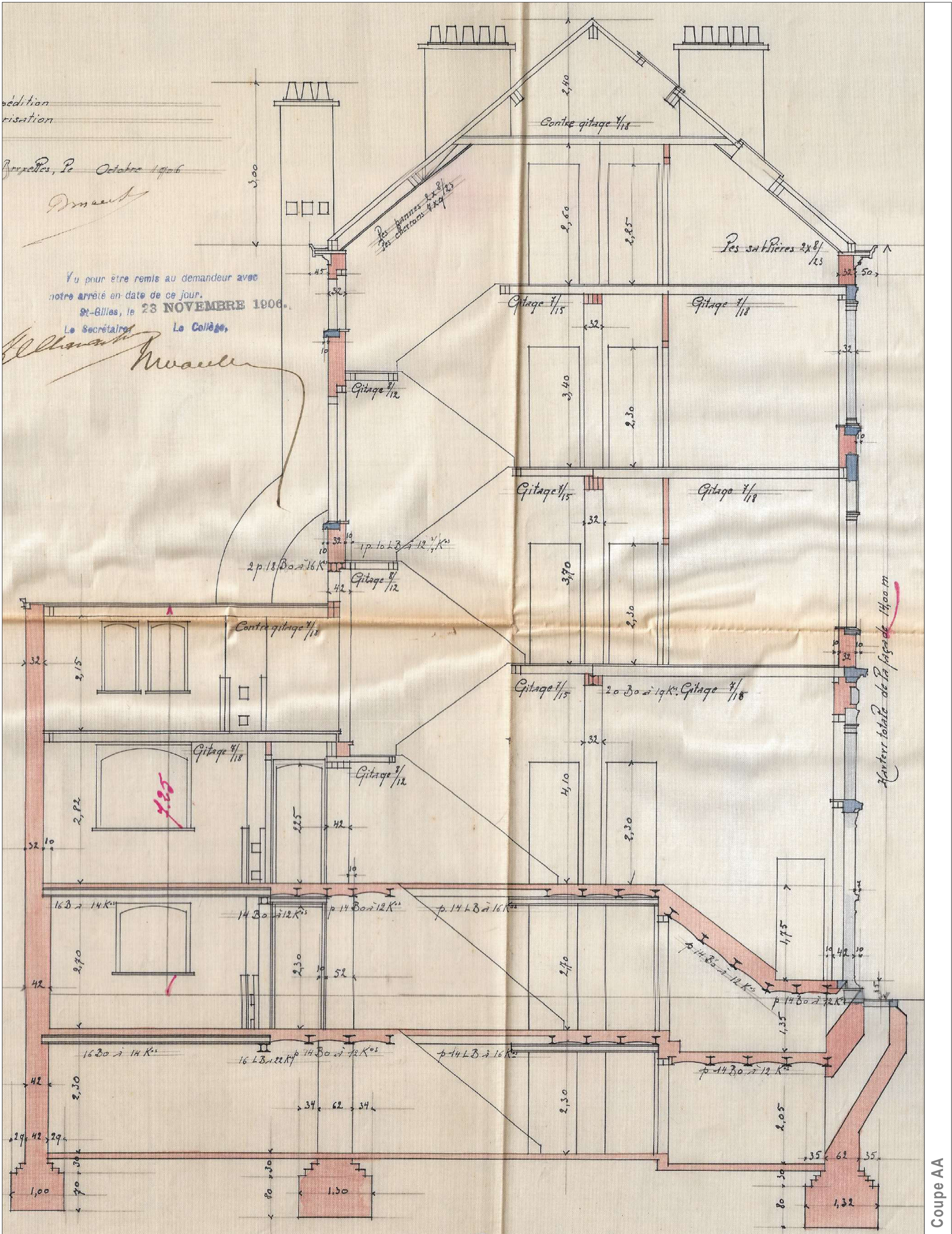


Architectural drawing of the front elevation of a building. The drawing shows a multi-story facade with columns, windows, and decorative elements. The drawing includes dimensions and numbered annotations (1, 2, 3, 4) indicating specific features and measurements.

Key features and dimensions:

- Top Section:** Two windows with dimensions $232\frac{1}{4}$ and $232\frac{1}{4}$. A central vertical element with a width of $9\frac{1}{2}$.
- Middle Section:** A large arched opening on the left with a width of $27\frac{1}{2}$ and a height of $211\frac{1}{2}$. A central vertical element with a width of $31\frac{1}{2}$ and a height of $27\frac{1}{2}$. A large rectangular opening on the right with a width of 100 and a height of $31\frac{1}{2}$.
- Bottom Section:** A large rectangular opening on the left with a width of $51\frac{1}{2}$ and a height of $51\frac{1}{2}$. A central vertical element with a width of $51\frac{1}{2}$ and a height of $51\frac{1}{2}$. A large rectangular opening on the right with a width of 100 and a height of $27\frac{1}{2}$. A small rectangular opening at the bottom right with a width of 180 and a height of 161 .

Numbered annotations (1, 2, 3, 4) are placed throughout the drawing to indicate specific features and measurements.



<